

2020 Park Funding Facts

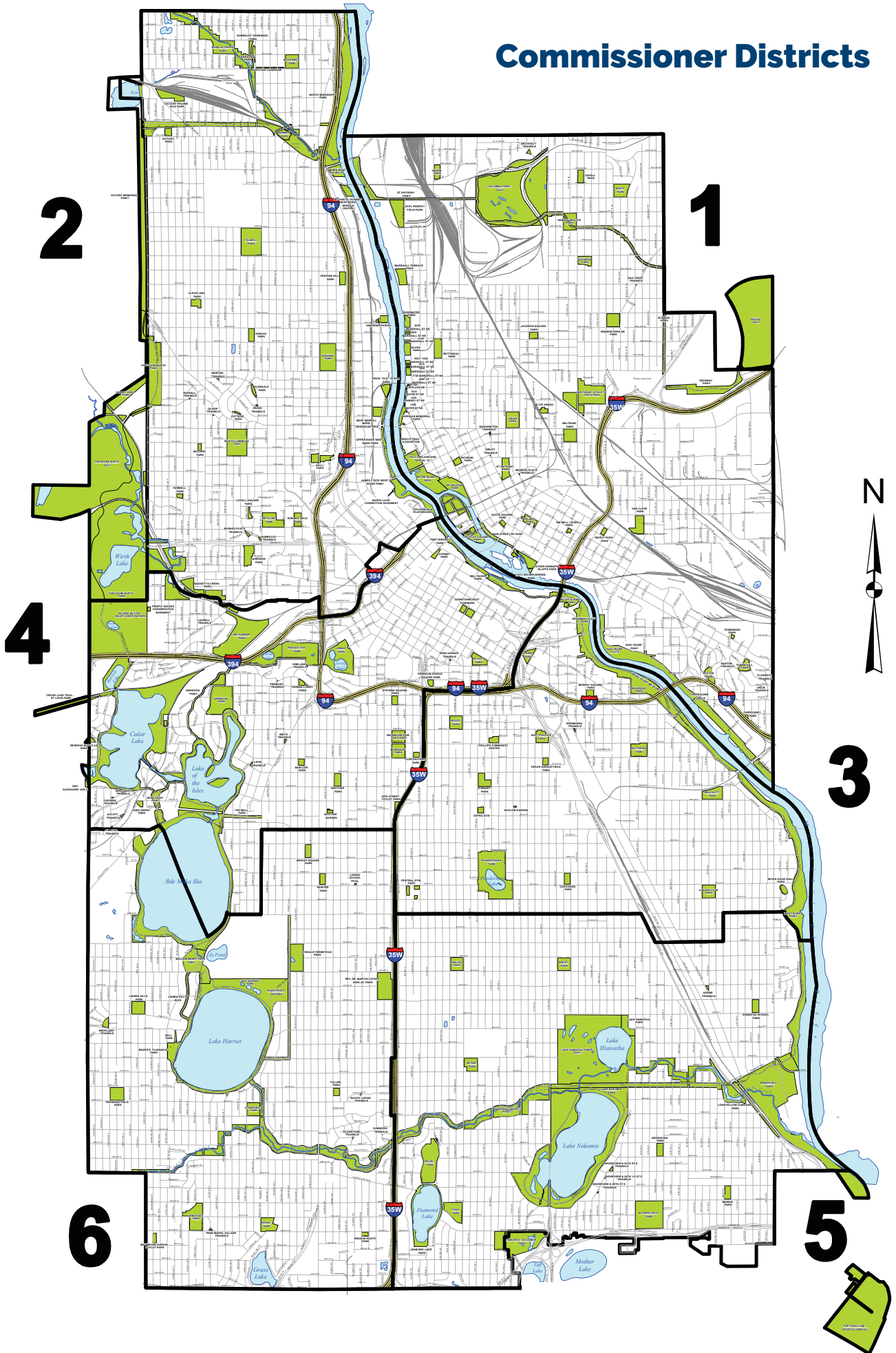
Comparison by Geographical Area and Commissioner District

| | NE/SE District 1 | N District 2 | Upper S District 3 | Upper SW District 4 | Lower S District 5 | Lower SW District 6 |
|---|-----------------------------|----------------------------|-------------------------------|--------------------------------|-------------------------------|--------------------------------|
| Population per American Community Survey, 2014–2019 | 74,445 | 71,967 | 70,301 | 67,608 | 65,156 | 65,560 |
| Average annual capital investment per capita – 2014–2019 Slated for 2020–2025 | \$41 \$50 | \$39 \$68 | \$49 \$29 | \$35 \$29 | \$29 \$28 | \$14 \$12 |
| Youth and Family Recreation investment per capita, 2019 | \$35 | \$38 | \$51 | \$20 | \$38 | \$21 |
| Maintenance and Operations investments per capita, 2019 | \$68 | \$73 | \$44 | \$61 | \$75 | \$76 |
| Parks | 41 | 39 | 20 | 37 | 22 | 24 |
| Total Acres – Land | 795 | 1,056 | 316 | 728 | 1,076 | 632 |
| Total Acres – Water | 22 | 141 | 57 | 576 | 401 | 568 |
| Land acquisition 2014–2019 | 5.59 acres | 7.68 acres | 3.15 acres | 4.18 acres | 0 acres | 0 acres |
| Recreation Centers ⁽¹⁾ | 8 | 6 | 11 | 4 | 9 | 11 |
| Play Areas ⁽¹⁾ | 22 | 28 | 18 | 17 | 18 | 15 |
| Wading Pools ⁽¹⁾ | 13 | 13 | 11 | 6 | 10 | 9 |
| Basketball and Tennis courts | 46 | 33 | 31 | 26 | 40 | 44 |
| Neighborhood Parks – funds allocated for capital improvements, 2014–2019 ⁽²⁾ | \$2,810,270 | \$6,604,431 | \$12,837,786 | \$4,464,697 | \$7,462,564 | \$2,448,193 |
| Regional Parks – funds allocated for capital improvements, 2014–2019 | \$15,314,021 | \$10,228,333 | \$7,965,644 | \$9,530,569 | \$4,044,500 | \$3,169,500 |
| Neighborhood Parks – funds slated for capital improvements, 2020–2025 ⁽²⁾ | \$14,442,938 | \$14,865,327 | \$9,754,855 | \$9,271,129 | \$3,358,967 | \$3,257,453 |
| Regional Parks – funds slated for capital improvements, 2020–2025 | \$8,109,459 | \$14,676,771 | \$2,294,535 | \$2,684,250 | \$7,600,265 | \$1,538,375 |
| Maintenance and Operations – funds invested 2019 | \$5,088,360 | \$5,235,278 | \$3,097,810 | \$4,117,378 | \$4,862,340 | \$4,979,938 |
| Key Youth and Family Recreation Services – funds invested in 2019 | \$2,634,580 | \$2,734,521 | \$3,618,866 | \$1,351,303 | \$2,463,746 | \$1,352,999 |

¹ Examples of park assets available city-wide.

² Does not include approximately \$3.7 million per year for neighborhood park rehabilitation, beginning in 2017.

Commissioner Districts



2020 Park Funding Facts

Northeast/Southeast–District 1

Investing in Your Community

- 74,445** Service area population estimate (American Community Survey 2014–2019)
- \$41/50** Average annual capital investments per capita (2014–2019 / slated for 2020–2025)
- \$35** Youth and family recreation investments per capita (2019)
- \$68** Maintenance and Operations Investments per capita (2019)

2014–2019 Improvement Highlights

- Sheridan Memorial Park – veteran’s memorial (2014); play areas, picnic shelter, basketball court, paths (2019)
- Dickman, Luxton and Windom NE Parks – new play areas
- Logan and Van Cleve Parks – new wading pools
- Northeast Athletic Field Park – field renovations, new paths and restrooms
- Northeast Recreation Center opened
- Hall’s Island restored, including new riverfront access
- Boom Island-Nicollet Island Bridge restored
- Mississippi East Bank Trail completed
- Columbia Park picnic shelter renovated

2020–2025 Improvement Highlights

- Graco Park – new regional park next to Hall’s Island
- Prospect Park neighborhood – new neighborhood park
- Father Hennepin Bluff Park – new bandshell, play areas, art, gardens, and path improvements
- Nicollet Island-East Bank Trail connection improvements
- Grand Rounds Missing Link – new trail
- Columbia Parkway – trail repair
- Northeast Athletic Field Park – additional field renovations, new play areas
- Cavell, Holmes, Marcy and Van Cleve parks – new play areas
- Audubon, Beltrami, Bottineau, Jackson Square, Logan, St. Anthony parks – master plan-driven improvements funded by NPP20
- Above the Falls Regional Park – master plan-driven improvements funded by Met Council

\$2.63 million Invested in 2019 for Key Youth and Family Recreation Services

- \$1,994,698** invested in recreation centers and programs
- \$106,790** appropriated resources for youth sports programming: leagues for 11 different sports along with the officials, equipment, awards etc.
- \$373,708** appropriated resources for aquatics programming: lifeguard services and swimming lessons
- \$17,550** invested in Pop-Up Parks and StreetReach
- \$113,433** invested in Youthline recreation mentoring programs for teens 12–16
- \$28,401** invested in Teen Teamworks employment program



Nordic Walking at Northeast Athletic Field Park



Sheridan Memorial Park



Halls Island



Northeast Recreation Center

Fast Facts

- 41** Parks
- 817** Total Acres
- 795** Land Acres
- 22** Water Acres
- 5.59 acres** Land Acquisition 2014–2019
- 8** Recreation Centers⁽¹⁾
- 22** Play Areas⁽¹⁾
- 13** Wading Pools⁽¹⁾
- 46** Basketball and Tennis Courts⁽¹⁾

\$2.81 million Neighborhood Parks – funds allocated for capital improvements, 2014–2019⁽²⁾

\$15.31 million Regional Parks – funds allocated for capital improvements, 2014–2019

\$14.44 million Neighborhood Parks – funds allocated for capital improvements, 2020–2025

\$8.11 million Regional Parks – funds allocated for capital improvements, 2020–2025

\$5.09 million Maintenance and Operations – funds invested in 2019

\$2.63 million Key youth and family services – funds invested in 2019

¹ Examples of park assets available city-wide.

² Does not include approximately \$3.7 million per year for neighborhood park rehabilitation, beginning in 2017.

Commissioner District 1



Neighborhood Parks

- Architect Triangle
- Audubon Park
- Barton Triangle
- Beltrami Park
- Bottineau Park
- Caleb Dorr Circle
- Cavell Park
- Chergosky Park
- Chute Square Park
- Clarence Triangle
- Columbia Park/Golf
- Deming Heights Park
- Dickman Park
- Gross Golf
- Hiview Park
- Holmes Park
- Jackson Square Park
- Logan Park
- Luxton Park
- Marcy Holmes Park
- Monroe Place Triangle
- NE Ice Arena
- Northeast Athletic Field Park
- NW Bell Property Park
- Oak Crest Triangle
- Orlin Triangle
- Sibley Triangle
- St Anthony Park
- Tower Hill Park
- Van Cleave Park
- Waite Park
- Washington Triangle
- Windom Park NE
- Xcel Energy Field

Regional Parks and Trails

- Above the Falls Regional Park
- Edgewater Park
- Gluek Park
- Halls Island and Proposed Graco Park
- Marshall Terrace Park
- Sheridan Memorial Park
- Central Mississippi
- Riverfront Regional Park
- B. F. Nelson Park
- Boom Island Park
- Father Hennepin Bluffs
- Lucy Wilder Morris Park
- Main Street Southeast Park
- Nicollet Island Park
- Columbia Parkway Regional Trail
- Mississippi Gorge Regional Park
- East River Flats
- East River Parkway
- Ridgway Parkway
- Saint Anthony Parkway
- Stinson Parkway



2020 Park Funding Facts

North-District 2

Investing in Your Community

- 71,967** Service area population estimate (American Community Survey 2014–2019)
- \$39/68** Average annual capital investments per capita (2014–2019 / slated for 2020–2025)
- \$38** Youth and family recreation investments per capita (2019)
- \$73** Maintenance and Operations Investments per capita (2019)

2014–2019 Improvement Highlights

- North Commons Recreation Center – renovated gym, building-wide improvements
- The Trailhead outdoor recreation hub opened at Theodore Wirth Regional Park
- Bethune Park – new play area, wading pool
- Harrison Park – new wading pool
- Brownie Lake Park – trail improvements, canoe launch, pedestrian bridge, landscaping
- Ryan Lake Park – new dock, community garden
- Webber Natural Swimming Pool opened

2020–2025 Improvement Highlights

- Folwell Park – new play areas, athletic field, pickleball/tennis courts
- Perkins Hill Park – new bike skills course
- Cleveland, Farview, Lovell Square Parks – play areas
- 26th Avenue North Overlook opened
- Carl W. Kroening Nature Center – nature play area
- Upper Harbor Terminal – new regional park
- North Loop neighborhood – new neighborhood park
- Bassett’s Creek, Bethune, Bohanon, Cottage, Cleveland, Farwell, Farview, Folwell, Glen Gale, Hall, Harrison, Jordan, North Commons, Perkins Hill, Shingle Creek, Sumner Field, Victory and Willard parks – master plan-driven improvements funded by NPP20
- Irving, Oliver, Newton, Russell Triangles – master plan-driven improvements funded by NPP20
- North Mississippi Regional Park, Victory Memorial Parkway, Luce Line Trail – trail improvement
- Theodore Wirth Regional Park – master plan-driven improvements funded by Met Council

\$2.73 million Invested in 2019 for Key Youth and Family Recreation Services

- \$1,786,904** Invested in recreation centers and programs
- \$128,510** Appropriated resources for youth sports programs: leagues for 11 different sports plus officials, equipment, awards, etc.
- \$259,880** Appropriated resources for Aquatics programming: lifeguard services and swimming lessons
- \$80,243** Invested in Pop-Up Parks and StreetReach
- \$64,680** Invested in Youthline recreation mentoring programs for teens 12–16
- \$214,304** Invested in Teen Teamworks employment program

- ### Fast Facts
- 39** Parks
 - 1,197** Total Acres
 - 1,056** Land Acres
 - 141** Water Acres
 - 7.68 acres** Land Acquisition 2014–2019

- 6** Recreation Centers⁽¹⁾
- 28** Play Areas⁽¹⁾
- 13** Wading Pools⁽¹⁾
- 33** Basketball and Tennis Courts⁽¹⁾

\$6.6 million Neighborhood Parks – funds allocated for capital improvements, 2014–2019⁽²⁾

\$10.23 million Regional Parks – funds allocated for capital improvements, 2014–2019

\$14.86 million Neighborhood Parks – funds allocated for capital improvements, 2020–2025

\$14.68 million Regional Parks – funds allocated for capital improvements, 2020–2025

\$5.24 million Maintenance and Operations – funds invested in 2018

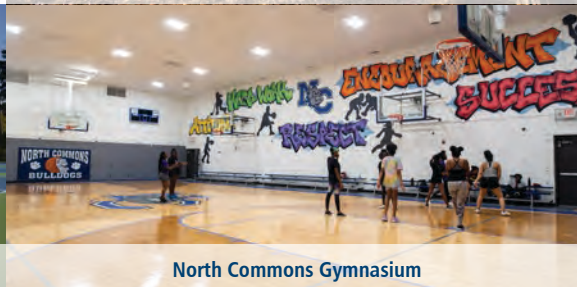
\$2.73 million Key youth and family services – funds invested in 2019



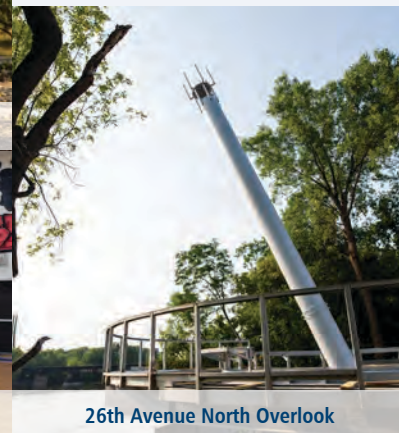
The Trailhead



Nature play area at North Mississippi Park



North Commons Gymnasium



26th Avenue North Overlook



Follwell Park tennis courts

¹ Examples of park assets available city-wide.

² Does not include approximately \$3.7 million per year for neighborhood park rehabilitation, beginning in 2017.

Commissioner District 2



Neighborhood Parks

- Barnes Place Triangle
- Bassett's Creek Park
- Bethune Park
- Bohannon Park
- Cleveland Park
- Cottage Park
- Creekview Park
- Farview Park
- Farwell Park
- Folwell Park
- Glengale Park
- Hall Park
- Harrison Park
- Humboldt Greenway Park
- Humboldt Triangle
- Irving Triangle
- Jordan Park
- Lovell Square Park
- MPRB Headquarters
- Newton Triangle
- North Commons Park
- Oliver Triangle
- Perkins Hill Park
- Russell Triangle
- Ryan Lake Park
- Sumner Field Park
- Valley View Park
- Victory Park
- Victory Prairie Dog Park
- Webber Park
- Willard Park

Regional Parks and Trails

- Above the Falls Regional Park
- Orvin "Ole" Olson Park
- James I. Rice Parkway
- Central Mississippi
- Riverfront Regional Park
- Luce Line Regional Trail
- North Mississippi Regional Park
- Shingle Creek Regional Trail
- Theodore Wirth Parkway
- Theodore Wirth Regional Park
- Theodore Wirth Golf Course
- Victory Memorial Drive and Wirth Parkway
- West River Parkway



2020 Park Funding Facts

Upper South–District 3

Investing in Your Community

- \$70,301** Service area population estimate (American Community Survey 2014–2019)
- \$49/29** Average annual capital investments per capita (2014–2019 / slated for 2020–2025)
- \$51** Youth and family recreation investments per capita (2019)
- \$44** Maintenance and Operations Investments per capita (2019)

2014–2019 Improvement Highlights **\$3.62 million Invested in 2019 for Key Youth and Family Recreation Services**

- Central Gym Park – new play areas, paths, gathering space, athletic field and more
- Peavey Park – three new basketball courts, new play areas, picnic pavilion, athletic field, rain gardens and more
- Phillips Aquatics Center opened
- Cedar Avenue Field Park – new grills, picnic tables, play area surfacing
- Annie Young Meadow – new paths, picnic tables, grills and bathrooms
- Matthews and Powderhorn Parks – new play areas and wading pool
- Longfellow Park – new play areas
- Elliot Park – new full-size soccer field, expanded skate park and new path lighting

\$2,495,521 Invested in recreation centers and programs

\$150,230 Appropriated resources for youth sports programs: leagues for 11 different sports plus officials, equipment, awards, etc.

\$488,435 Appropriated resources for Aquatics programming: lifeguard services and swimming lessons

\$23,535 Invested in Pop-Up Parks and StreetReach

\$264,667 Invested in Youthline recreation mentoring programs for teens 12-16

\$196,468 Invested in Teen Teamworks employment program

2020–2025 Improvement Highlights

- Central Gym – new skatepark
- Elliot Park – expanded skatepark
- Currie Park – new splash pad, basketball court, play area fencing, path/lighting improvements
- Cedar-Riverside neighborhood – pre-design plans for new and/or expanded recreation center
- Cedar Avenue Field, Central Gym, Corcoran, East Phillips, Murphy Square, Powderhorn, Riverside and Stewart Parks – master plan-driven improvements funded by NPP20
- Mississippi Gorge Regional Park – master plan-driven improvements funded by Met Council



Youth Gardening at Whittier Park



Central Gym Park



Phillips Aquatics Center



Future Currie Park splash pad



Peavey Park basketball courts

Fast Facts

20
Parks

373
Total Acres

316
Land Acres

57
Water Acres

3.15 acres
Land Acquisition 2014–2019

11
Recreation Centers ⁽¹⁾

18
Play Areas ⁽¹⁾

11
Wading Pools ⁽¹⁾

31
Basketball and Tennis Courts ⁽¹⁾

\$12.84 million
Neighborhood Parks – funds allocated for capital improvements, 2014–2019 ⁽²⁾

\$7.97 million
Regional Parks – funds allocated for capital improvements, 2014–2019

\$9.75 million
Neighborhood Parks – funds allocated for capital improvements, 2020–2025

\$2.29 million
Regional Parks – funds allocated for capital improvements, 2020–2025

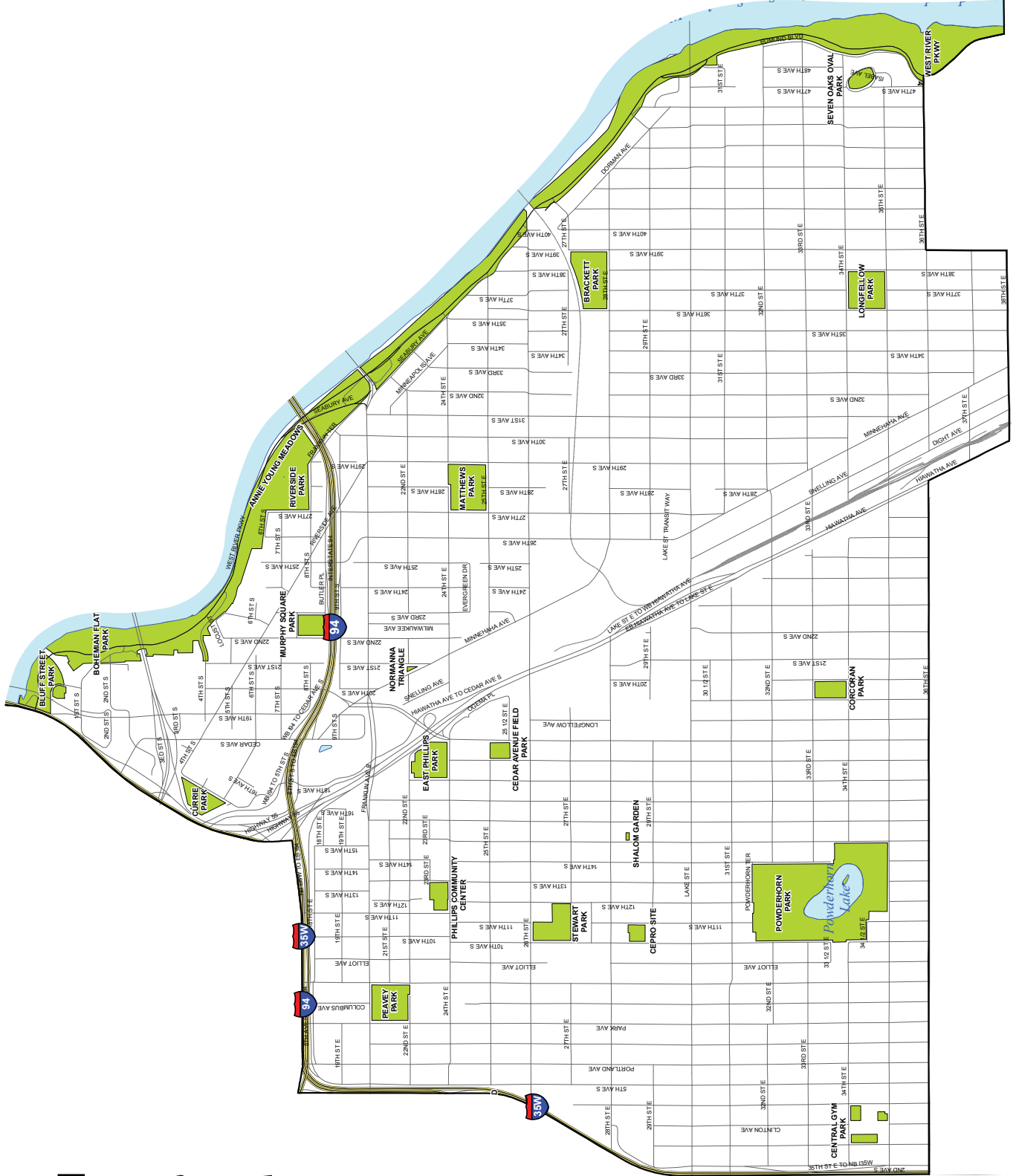
\$3.1 million
Maintenance and Operations – funds invested in 2019

\$3.62 million
Key youth and family services – funds invested in 2019

¹ Examples of park assets available city-wide.

² Does not include approximately \$3.7 million per year for neighborhood park rehabilitation, beginning in 2017.

Commissioner District 3



Neighborhood Parks

- Bluff Street Park
- Brackett Park
- Cedar Avenue Field Park
- Central Gym Park
- Cepro Site
- Corcoran Park
- Currie Park
- East Phillips Park
- Longfellow Park
- Matthews Park
- Murphy Square Park
- Normanna Triangle
- Peavey Park
- Phillips Community Center
- Powderhorn Park
- Seven Oaks Oval Park
- Shalom Garden
- Stewart Park

Regional Parks and Trails

- Mississippi Gorge Regional Park
- Bohemian Flats Park
- Riverside Park
- West River Parkway

2020 Park Funding Facts

Upper Southwest—District 4

Investing in Your Community

- 67,608** Service area population estimate (American Community Survey 2014–2019)
- \$35/29** Average annual capital investments per capita (2014–2019 / slated for 2020-2025)
- \$20** Youth and family recreation investments per capita (2019)
- \$61** Maintenance and Operations Investments per capita (2019)

2014–2019 Improvement Highlights **\$1.35 million Invested in 2019 for Key Youth and Family Recreation Services**

- Bde Maka Ska Park – trails resurfaced
- Eloise Butler Wildflower Garden and Bird Sanctuary – new boardwalk
- Gateway Park – fountain restoration
- Bassett’s Creek Park – new play areas, other improvements
- Cedar Lake South Beach – restroom building, plaza, landscaping
- Kenwood Recreation Center – efficiency and accessibility upgrades
- Minneapolis Sculpture Garden – full reconstruction with stormwater management
- Parade Park – baseball field upgrades, new scoreboard (2014); parking lot reconstructed (2019)

\$1,121,396 Invested in recreation centers and programs

\$52,693 Appropriated resources for youth sports programming: leagues for 11 different sports plus officials, equipment, awards, etc.

\$118,068 Appropriated resources for Aquatics programming: lifeguard services and swimming lessons

\$3,800 Invested in Pop-Up Parks

\$37,811 Invested in Youthline recreation mentoring programs for teens 12–16

\$17,535 Invested in Teen Teamworks employment program

2020–2025 Improvement Highlights

- Water Works project at Mill Ruins Park – riverfront access, new pavilion, trail improvements
- 28th Street Tot Lot and Loring Park – play areas
- Eloise Butler Wildflower Garden and Bird Sanctuary – entrance and shelter improvements
- Bryn Mawr Park – new play areas, athletic fields and path repaving
- Smith Triangle – new sculpture
- Bryn Mawr, Franklin Steele, The Mall, Whittier parks – master plan-driven improvements funded by NPP20



Gateway Fountain



Kenwood Recreation Center updates



Futer Water Works at Mill Ruins Park



Cedar Lake South Beach restrooms



Eloise Butler Wildflower Garden boardwalk

Fast Facts

- 37** Parks
- 1,304** Total Acres
- 728** Land Acres
- 576** Water Acres
- 4.18 acres** Land Acquisition 2014–2019
- 4** Recreation Centers ⁽¹⁾
- 17** Play Areas ⁽¹⁾
- 6** Wading Pools ⁽¹⁾
- 26** Basketball and Tennis Courts ⁽¹⁾

\$4.46 million Neighborhood Parks – funds allocated for capital improvements 2012–2017 ⁽²⁾

\$9.53 million Regional Park – funds allocated for capital improvements, 2012–2017

\$9.27 million Neighborhood Parks – funds allocated for capital improvements, 2020–2025

\$2.68 million Regional Parks – funds allocated for capital improvements, 2020–2025

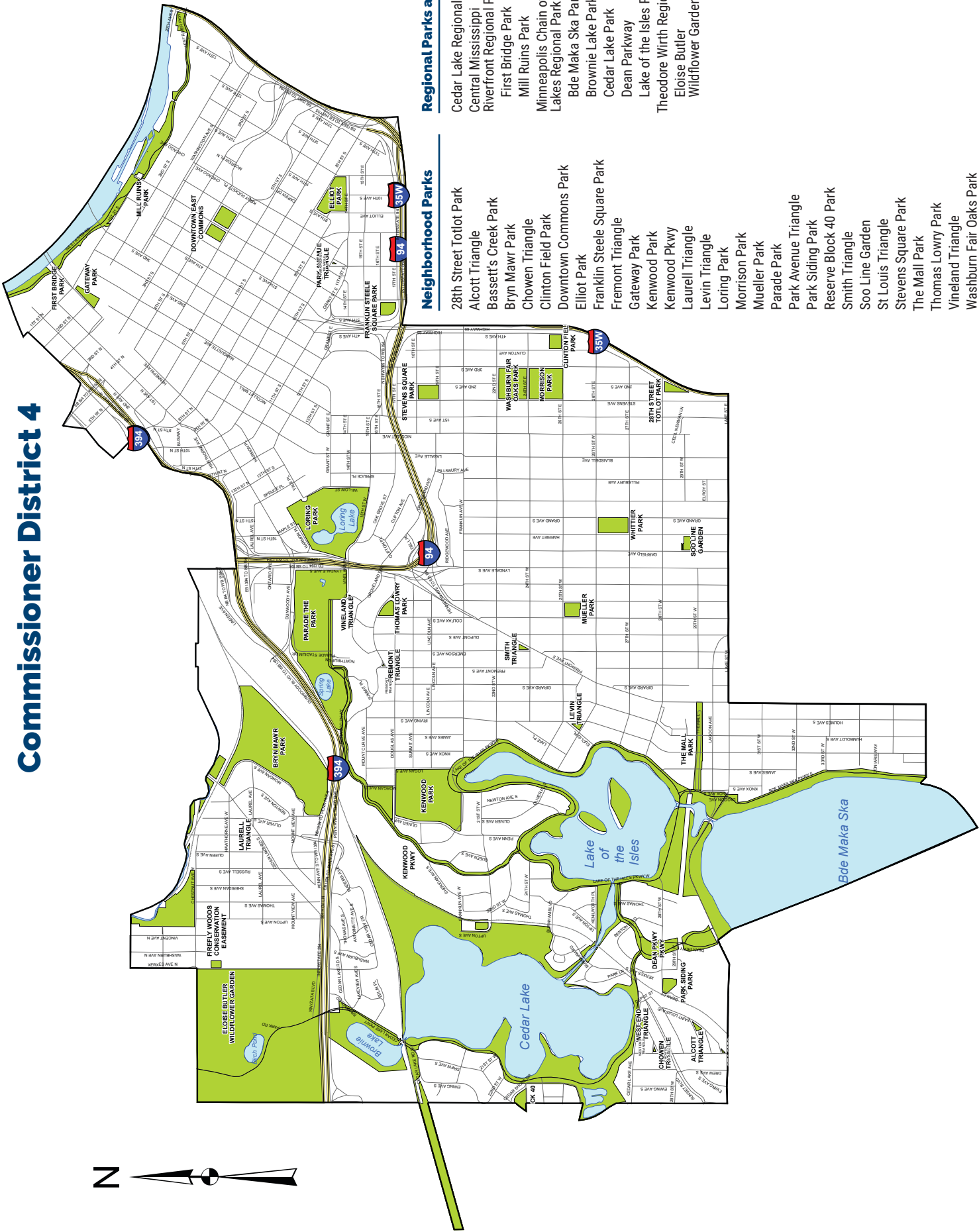
\$4.12 million Maintenance and Operations – funds invested in 2018

\$1.35 million Key youth and family services – funds invested in 2019

¹ Examples of park assets available city-wide.

² Does not include approximately \$3.7 million per year for neighborhood park rehabilitation, beginning in 2017.

Commissioner District 4



Regional Parks and Trails

- Cedar Lake Regional Park
- Central Mississippi Riverfront Regional Park
- First Bridge Park
- Mill Ruins Park
- Minneapolis Chain of Lakes Regional Park
- Bde Maka Ska Park
- Brownie Lake Park
- Cedar Lake Park
- Dean Parkway
- Lake of the Isles Park
- Theodore Wirth Regional Park
- Eloise Butler Wildflower Garden

Neighborhood Parks

- 28th Street Totlot Park
- Alcott Triangle
- Bassett's Creek Park
- Bryn Mawr Park
- Chowen Triangle
- Clinton Field Park
- Downtown Commons Park
- Elliot Park
- Franklin Steele Square Park
- Fremont Triangle
- Gateway Park
- Kenwood Park
- Kenwood Pkwy
- Laurel Triangle
- Levin Triangle
- Loring Park
- Morrison Park
- Mueller Park
- Parade Park
- Park Avenue Triangle
- Park Siding Park
- Reserve Block 40 Park
- Smith Triangle
- Soo Line Garden
- St Louis Triangle
- Stevens Square Park
- The Mall Park
- Thomas Lowry Park
- Vineland Triangle
- Washburn Fair Oaks Park
- West End Triangle
- Whittier Park

2020 Park Funding Facts

Lower South–District 5

Investing in Your Community

- 65,156** Service area population estimate (American Community Survey 2014–2019)
- \$29/28** Average annual capital investments per capita (2014–2019 / slated for 2020–2025)
- \$38** Youth and family recreation investments per capita (2019)
- \$75** Maintenance and Operations Investments per capita (2019)

2014–2019 Improvement Highlights

- Minnehaha Parkway Regional Trail – new boardwalk, repaving near Lyndale Ave.
- Bossen Field Park – new athletic fields, lighting, paths, play areas; building improvements
- Lake Nokomis Main Beach – new solar power shade canopy
- Lake Nokomis Regional Park – new play areas at 54th Street and Nokomis Community Center; shoreline enhancements and erosion control
- McRae Park – new athletic field
- Minnehaha Regional Park – pavilion renovated (2017), two new play areas, including universal access play equipment near Wabun Picnic Area (2014)

2020–2025 Improvement Highlights

- Phelps Park – new play areas, splash pad, picnic shelter, other improvements
- Keewaydin Park – new play areas with climbing wall
- McRae and Pearl Parks – new play areas
- Lake Hiawatha, Hiawatha School, Sibley, Todd Parks – master plan-driven improvements funded by NPP20
- Minnehaha Parkway Trail and Minnehaha, Mississippi Gorge, Nokomis-Hiawatha regional parks – master plan-driven improvements funded by Met Council

\$2.46 million Invested in 2019 for Key Youth and Family Recreation Services

- \$2,017,005** Invested in recreation centers and programs
- \$275,120** Appropriated resources for youth sports programming: leagues for 11 different sports plus officials, equipment, awards, etc.
- \$107,679** Appropriated resources for Aquatics programming: lifeguard services and swimming lessons
- \$8,904** Invested in Pop-Up Parks and Street Reach
- \$37,811** Invested in Youthline recreation mentoring programs for teens 12–16
- \$17,227** Invested in Teen Teamworks employment program



Outdoor Adventure Club at Pearl Park



McRae athletic field



Phelps Park playground



Minnehaha Parkway boardwalk



Bossen Field Park

Fast Facts

- 22** Parks
- 1,477** Total Acres
- 1,076** Land Acres
- 401** Water Acres
- 0 acres** Land Acquisition 2014–2019
- 9** Recreation Centers⁽¹⁾
- 18** Play Areas⁽¹⁾
- 10** Wading Pools⁽¹⁾
- 40** Basketball and Tennis Courts⁽¹⁾

\$7.46 million Neighborhood Parks – funds allocated for capital improvements 2014–2019⁽²⁾

\$4.04 million Regional Park – funds allocated for capital improvements, 2014–2019

\$3.36 million Neighborhood Parks – funds allocated for capital improvements, 2020–2025

\$7.6 million Regional Parks – funds allocated for capital improvements, 2020–2025

\$4.86 million Maintenance and Operations – funds invested in 2019

\$2.46 million Key youth and family services – funds invested in 2019

¹ Examples of park assets available city-wide.

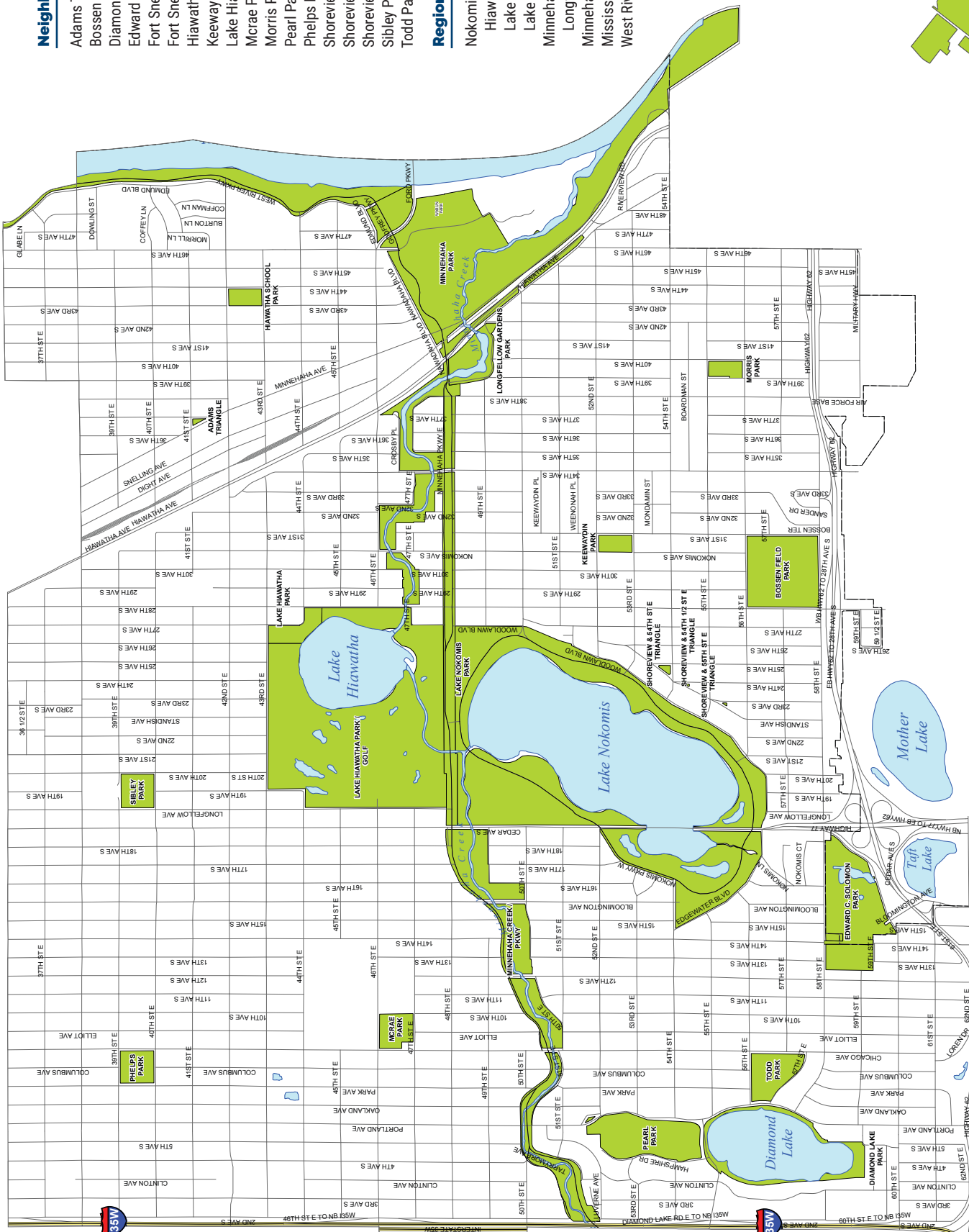
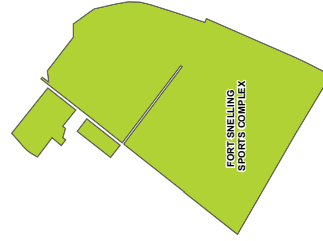
² Does not include approximately \$3.7 million per year for neighborhood park rehabilitation, beginning in 2017.

Neighborhood Parks

- Adams Triangle
- Bossen Field Park
- Diamond Lake Park
- Edward C. Solomon Park
- Fort Snelling Sports Complex
- Fort Snelling Sports Golf
- Hiawatha School Park
- Keewaydin Park
- Lake Hiawatha Park
- Mcrae Park
- Morris Park
- Pearl Park
- Phelps Park
- Shoreview & 54th 1/2 St E Triangle
- Shoreview & 54th St E Triangle
- Shoreview & 55th St E Triangle
- Sibley Park
- Todd Park

Regional Parks and Trails

- Nokomis-Hiawatha Regional Park
- Hiawatha Golf Course
- Lake Hiawatha Park
- Lake Nokomis Park
- Minnehaha Regional Park
- Longfellow Gardens
- Minnehaha Parkway
- Mississippi Gorge Regional Park
- West River Parkway



Commissioner District 5

FORT SNELLING SPORTS COMPLEX

2020 Park Funding Facts

Lower Southwest–District 6

Investing in Your Community

- 65,560** Service area population estimate (American Community Survey 2014–2019)
- \$14/12** Average annual capital investments per capita (2014–2019 / slated for 2020–2025)
- \$21** Youth and family recreation investments per capita (2019)
- \$76** Maintenance and Operations Investments per capita (2019)

2014–2019 Improvement Highlights

- Bde Maka Ska Park – new Indigenous public art
- Bde Maka Ska and Lake Harriet parks – trails resurfaced
- King’s Highway – road resurfaced
- Linden Hills Park – new bocce court
- Bryant Square, Painter and Fuller recreation centers – building-wide improvements
- Bryant Square Park – new wading pool, play areas, public art
- Washburn Tot Lot and Rev. Dr. Martin Luther King, Jr. Park – new play areas
- Roberts Bird Sanctuary – new fence, other improvements

2020–2025 Improvement Highlights

- Armatage, Kenny, Linden Hills parks – new play areas
- Lyndale Farmstead Recreation Center – building-wide improvements
- Fuller and Painter Parks – master plan-driven improvements funded by NPP20
- Chain of Lakes Regional Park and Minnehaha Parkway Regional Trail – master plan-driven improvements funded by Met Council

\$1.35 million Invested in 2019 for Key Youth and Family Recreation Services

- \$903,652** Invested in recreation centers and programs
- \$242,540** Appropriated resources for youth sports programming: leagues for 11 different sports plus officials, equipment, awards, etc.
- \$107,679** Appropriated resources for Aquatics programming: lifeguard services and swimming lessons
- \$2,100** Invested in Pop-Up Parks
- \$37,811** Invested in Youthline recreation mentoring programs for teens 12–16
- \$59,217** Invested in Teen Teamworks employment program



Gymnastics at Lynnhurst Park



Bde Maka Ska Indigenous art



Washburn Tot Lot



Bryant Square wading pool

Fast Facts

- 24** Parks
- 1,200** Total Acres
- 632** Land Acres
- 568** Water Acres
- 0 acres** Land Acquisition 2014–2019
- 11** Recreation Centers ⁽¹⁾
- 15** Play Areas ⁽¹⁾
- 9** Wading Pools ⁽¹⁾
- 44** Basketball and Tennis Courts ⁽¹⁾

\$2.45 million Neighborhood Parks – funds allocated for capital improvements 2014–2019 ⁽²⁾

\$3.17 million Regional Park – funds allocated for capital improvements, 2014–2019

\$3.26 million Neighborhood Parks – funds allocated for capital improvements, 2020–2025

\$1.54 million Regional Parks – funds allocated for capital improvements, 2020–2025

\$4.98 million Maintenance and Operations – funds invested in 2019

\$1.35 million Key youth and family services – funds invested in 2019

¹ Examples of park assets available city-wide.

² Does not include approximately \$3.7 million per year for neighborhood park rehabilitation, beginning in 2017.

Commissioner District 6



2.8 miles west of Minneapolis
on Excelsior Boulevard

Neighborhood Parks

- Armatage Park
- Bryant Square Park
- Dell Park
- Elmwood Triangle
- Fuller Park
- Gladstone Triangle
- Kenny Park
- Kings Highway
- Linden Hills Blvd
- Linden Hills Park
- Loring School Pool
- Lyndale Farmstead Park
- Lynnhurst Park
- Meadowbrook Golf
- Painter Park
- Penn Model Village Triangle
- Pershing Field Park
- Rev. Dr. Martin Luther King Jr. Park
- Rustic Lodge Triangle
- Washburn Avenue Totlot Park
- Waveland Triangle
- Windom South Park

Regional Parks and Trails

- Minneapolis Chain of Lakes Regional Park
- Beard's Plaisance
- Bde Maka Ska Park
- Lake Harriet Park
- Lyndale Park
- William Berry Park
- Minnehaha Creek Park
- Minnehaha Parkway Regional Trail

